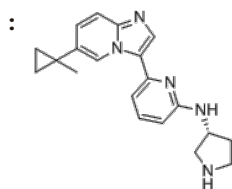


Product Name : KME-2780
Cat. No. : PC-21201
CAS No. : 2968466-26-2
Batch No. : PC-2120101
Chemical Name : (R)-6-(6-(1-methylcyclopropyl)imidazo[1,2-a]pyridin-3-yl)-N-(pyrrolidin-3-yl)pyridin-2-amine

PHYSICAL AND CHEMICAL PROPERTIES

Molecular Weight : 333.44
Molecular Formula : C₂₀H₂₃N₅
Storage : Powder -20°C 12 Months
4°C 6 Months
In solvent -80°C 6 Months
-20°C 6 Months

Chemical Structure



CAS: 2968466-26-2

ANALYTICAL DATA

Appearance : Solid powder
¹H NMR Spectrum : Consistent with
HPLC : Consistent with
NP : Consistent with
Purity (HPLC and/or LCMS) : >98%
Conclusion : The product has been tested and complies with the given specifications.

Caution: Product has not been fully validated for medical applications. Lab Use Only!

E-mail: tech@probechem.com